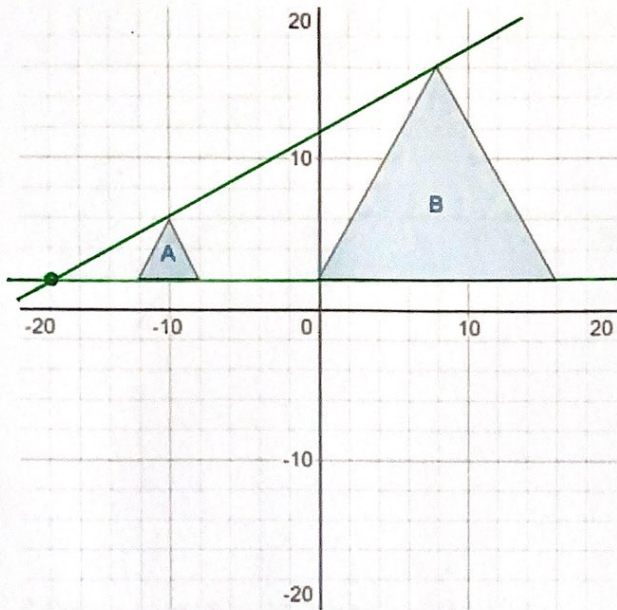




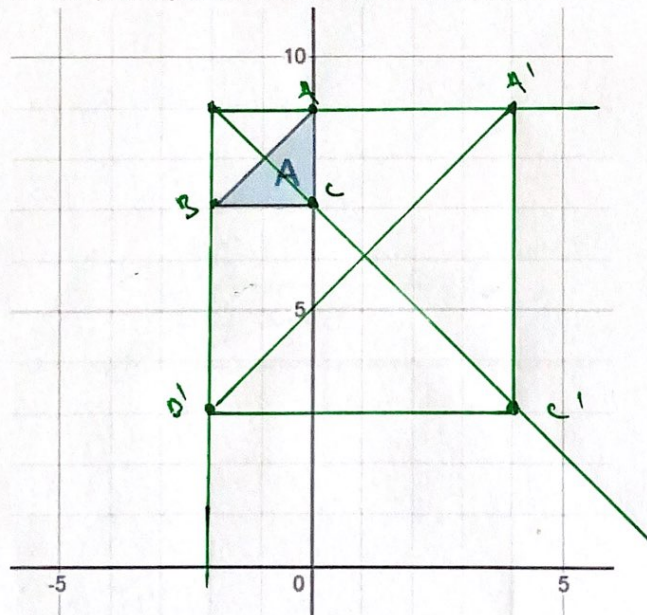
QT Enlargement

1. Describe fully the single transformation that maps shape A onto shape B



Enlargement
Scale Factor 4
centre $(-20, 2)$

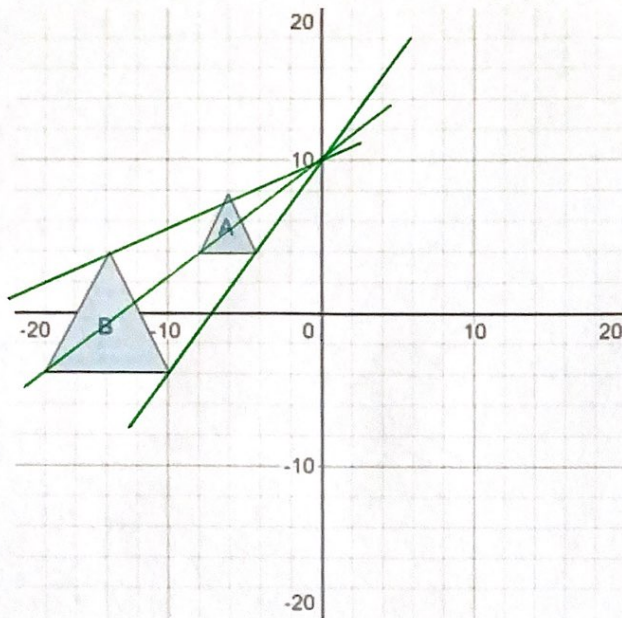
2. Enlarge triangle A by scale factor 3, centre $(-2, 9)$.



$$\begin{pmatrix} 2 \\ -2 \end{pmatrix} + 3 = \begin{pmatrix} 6 \\ -6 \end{pmatrix}$$

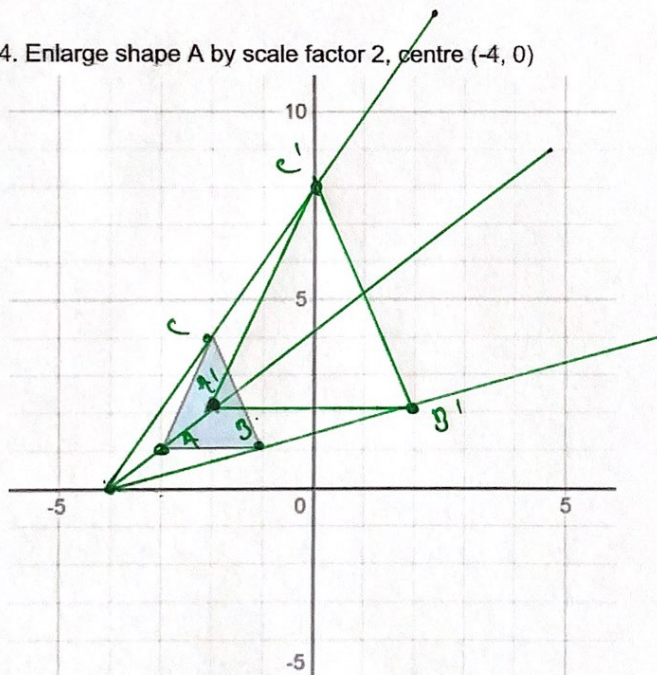


3. Describe fully the single transformation which maps shape A onto shape B.



Enlargement
Scale Factor 2
From centre
(0, 10)

4. Enlarge shape A by scale factor 2, centre (-4, 0)



$$B \begin{pmatrix} 3 \\ 1 \end{pmatrix} + 2 = \begin{pmatrix} 6 \\ 2 \end{pmatrix}$$

$$C \begin{pmatrix} 2 \\ 4 \end{pmatrix} \times 2 = \begin{pmatrix} 4 \\ 8 \end{pmatrix}$$