

QT Quick Test 5E



1. Amanda, Brice and Cas save some money in the ratio 3:4:9. Cas saved £150 more than Brice.

a. Show that Amanda saved £90

$$\begin{array}{l} A : B : C \\ 3 : 4 : 9 \\ \quad \quad \quad \downarrow +5 \\ \quad \quad \quad \downarrow \times 30 \\ \underline{90} : 120 : 270 \end{array}$$

Amanda saves £90

b. Show that the total amount of money saved is £480

$$90 + 120 + 270 = \underline{\underline{480}}$$

(3 marks)

2. Write these numbers in order of size. Start with the smallest number.

4×10^8

42×10^6

0.044×10^{10}

$4400 \times 10^4 \leftarrow$

40000×10^4
(3)

4200×10^4
(1)

44000×10^4
(4)

(2)

$42 \times 10^6, 4400 \times 10^4, 4 \times 10^8, 0.044 \times 10^{10}$

(3 marks)

QT Quick Test 5E

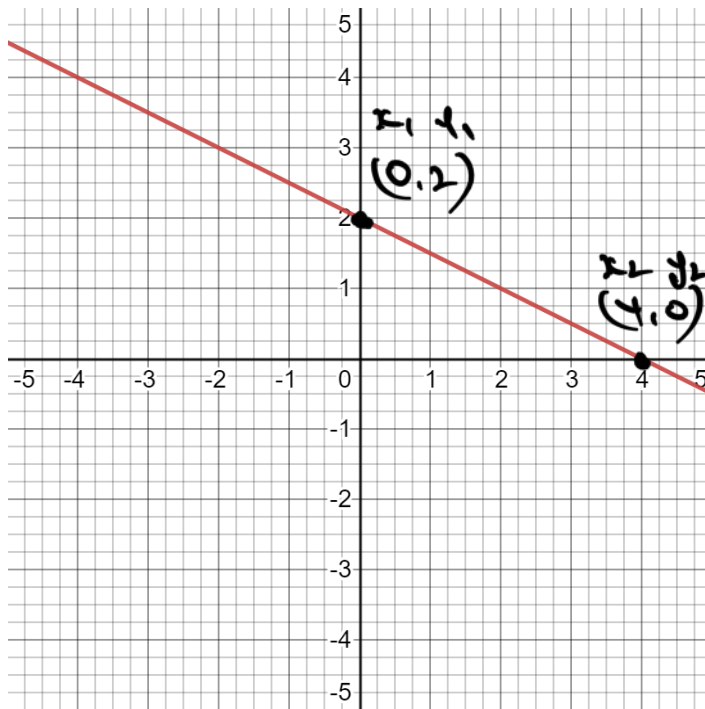


3. Simplify $(2a^3b^2)^3$

$$8a^9b^6$$

(2 marks)

4. The line L is drawn on the grid below. Find the gradient of line L.



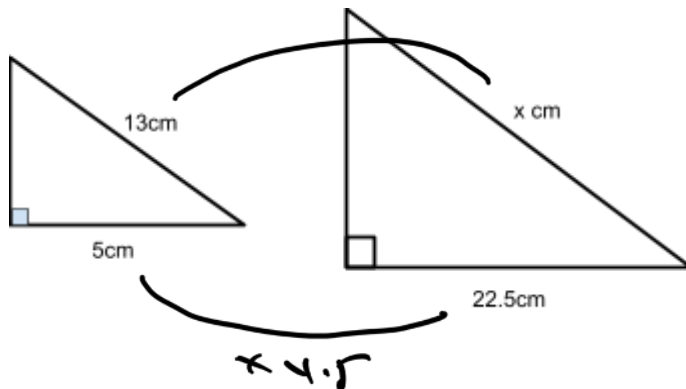
$$\frac{y_2 - y_1}{x_2 - x_1}$$
$$\frac{0 - 2}{4 - 0} = \frac{-2}{4}$$
$$= -\frac{1}{2}$$

(2 marks)

QT Quick Test 5E



5. These triangles are mathematically similar. Calculate the value of x .



$$13 \times 4.5 = 58.5$$
$$\therefore x = \underline{\underline{58.5 \text{ cm}}}$$

(2 marks)

6. Shruti buys a house for £192 000. After 3 years Shruti sells the house for £215 000. Calculate the percentage profit Shruti makes. Give your answer correct to 2 decimal places.

$$\% \text{ change} = \frac{\text{Difference}}{\text{original}} \times 100$$

$$= \frac{23,000}{192,000} \times 100$$

$$= \underline{\underline{11.98\%}}$$

(3 marks)

7. A map has a scale of 1 : 40000. The distance between two points on the map is 8cm. Work out the real distance between the two points. Give your answer in kilometres.

$$\begin{aligned} 1 &: 40000 \\ 8 &: 320,000 \text{ cm} \\ &: 3200 \text{ m} \\ &: 3.2 \text{ km} \end{aligned}$$

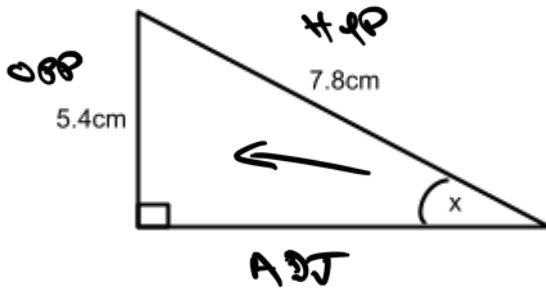
$$\underline{\underline{3.2 \text{ km}}}$$

(3 marks)

QT Quick Test 5E



8. Work out the size of the angle x . Give your answer correct to 3 significant figures.



SOH CAH TOA

$$\sin x = \frac{5.4}{7.8}$$

$$\sin^{-1}(\text{ANS}) = \underline{\underline{43.8^\circ}}$$

(3 marks)

9. Solve the equation $9(2x - 1) = 4(5x - 4)$

$$\begin{array}{r}
 18x - 9 = 20x - 16 \\
 -18x \quad -18x \\
 -9 = 2x - 16 \\
 +16 \quad +16 \\
 7 = 2x \\
 \div 2 \quad \div 2 \\
 3.5 = x \\
 \therefore \underline{\underline{x = 3.5}}
 \end{array}$$

(3 marks)

(/ 24 marks)